

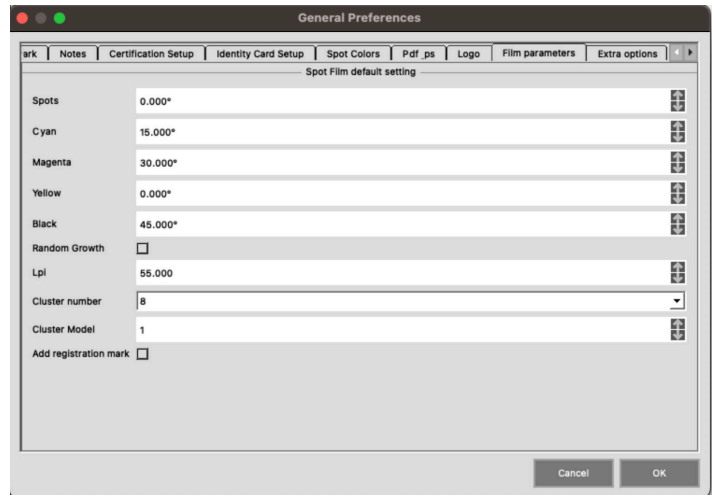
ColorMate™ HotFolders

GO ColorMate™ RIP HotFolders Setup.

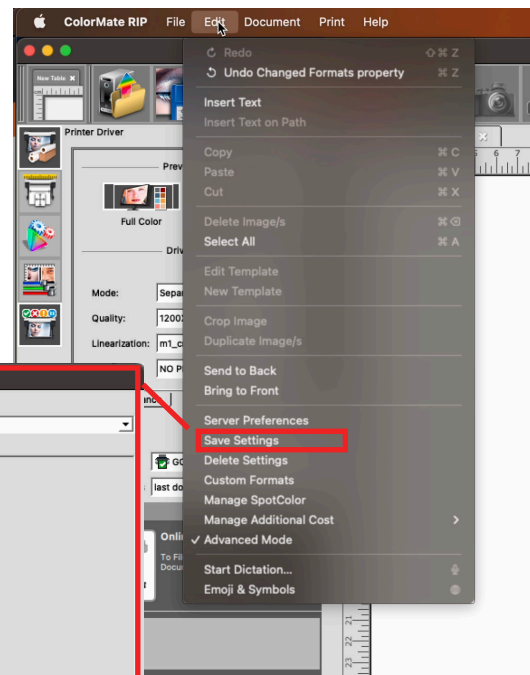
This bulletin describes the procedure for the HotFolders setup in ColorMate™ Rip Software.

A HoIFolder allows everyone in the network to save a file and then have this file printed through ColorMate™ RIP.

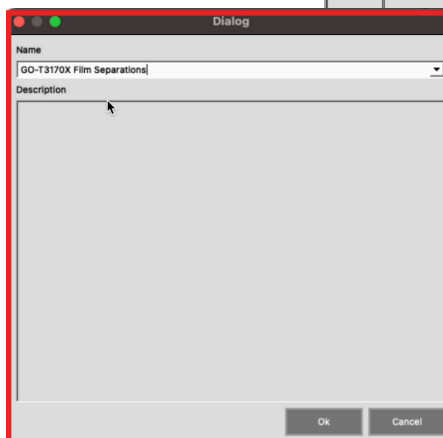
1. In your ColorMate™ RIP, check all the printing settings if necessary; go to the ColoMate™ **Preferences** and select your film default settings under the **Film Parameters** tab, where you can choose the desired values for: angles, LPI and Cluster.



2. Open the **Edit** menu and select **Save Settings**.



In the new window, use a name that helps identify the printing configuration being used.



3. Open the **File** menu and select New Hot Folder.

A new window will show up with different settings.

Name: To name your hot folder.

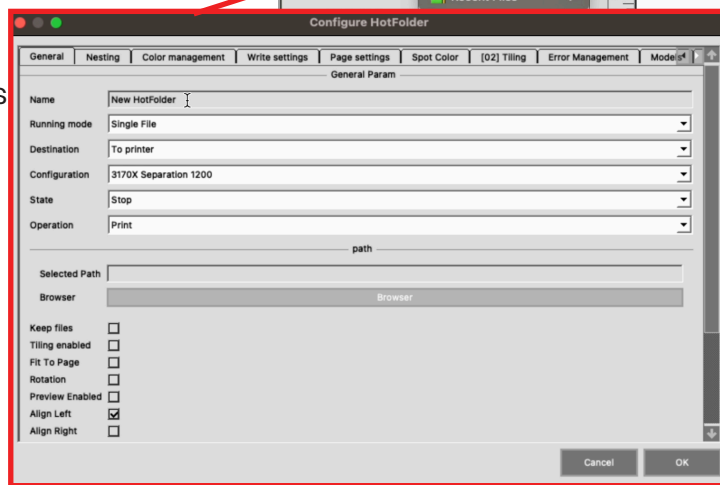
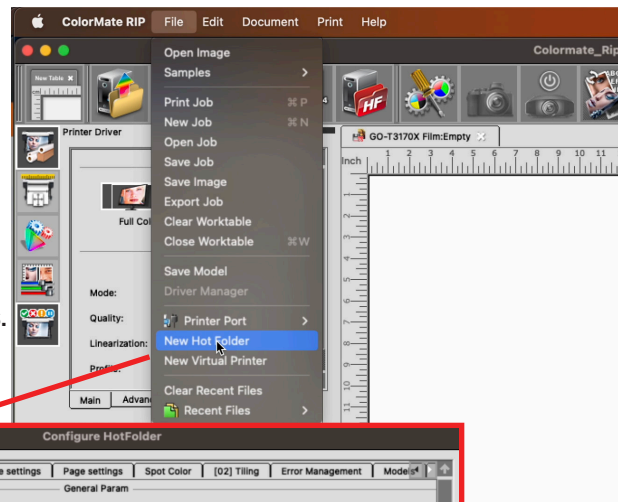
Running Mode: Use Single File to print one file at a time or Multiple File if you need to print several files.

Destination: Use To Printer.

Configuration: Select the settings name saved in Step 2.

State: It has three options, select Run if you need the printer to start once the file is saved in the HotFolder.

Operation: Select Print



Printing Mode: elect the most convenient option for your operation: every certain amount of minutes, every specific amount of images or Aftr Fill-in Area (recommended).

Time Out, Time to Star and Percent: Define when to start printing.

Select Path: To work with HotFolders, you should create a Folder in your computer that can be shared in the Network. Select Browse and look for that Folder.

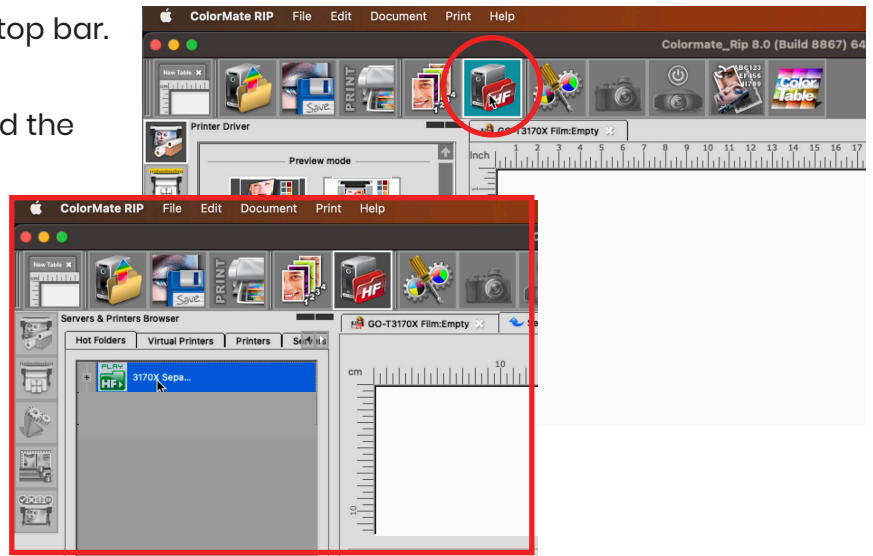
Nesting Strategy: Select how you need the nesting option to be applied.

Click **OK** to confirm and save the settings.

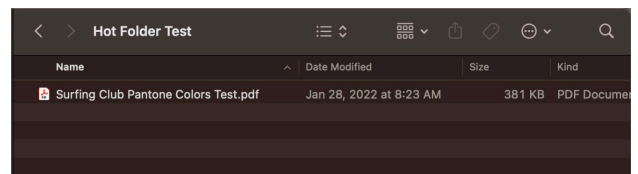


4. Click on the **HotFolder** icon in the top bar.

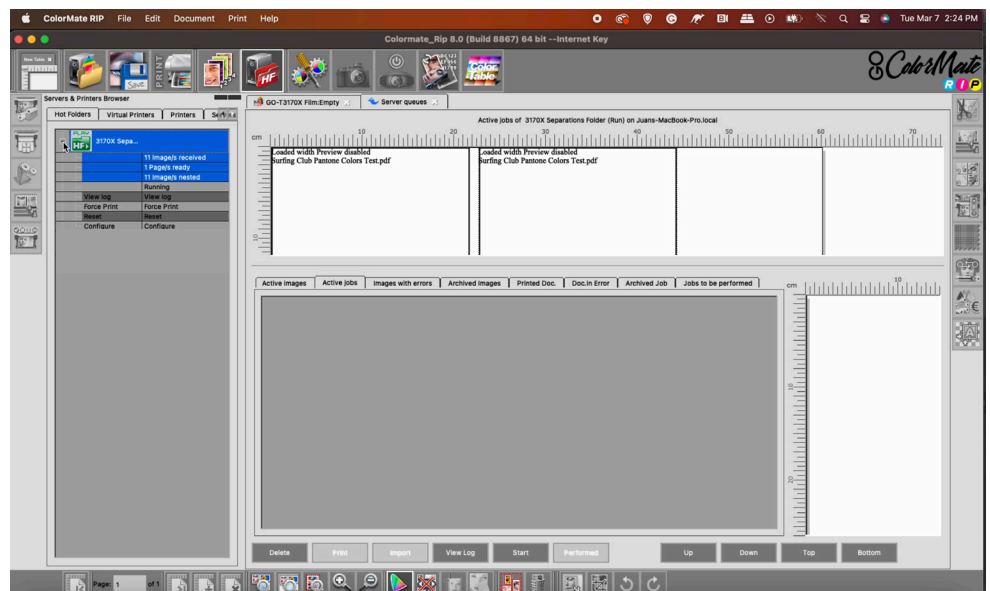
The **HotFolder** layout will appear, and the active **HotFolder** will be in Green.



5. Save or copy a file in the **Shared Folder** created on your computer. Anyone in the network can use this Folder, and the saved files will be automatically sent to ColoMate™ and will print based on the settings of the previous steps.

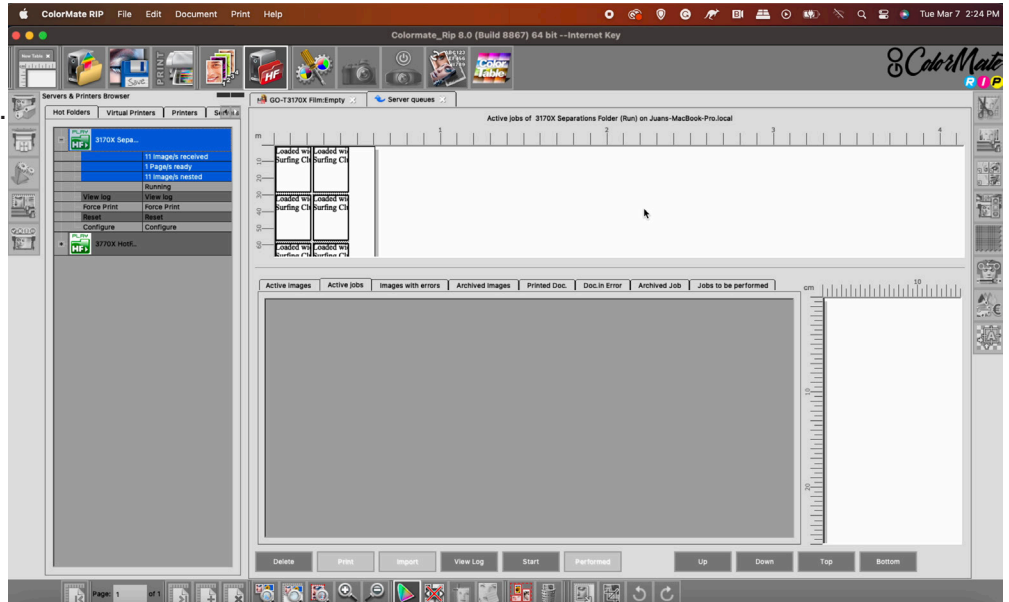


The image will be loaded in the interface and will start printing automatically.

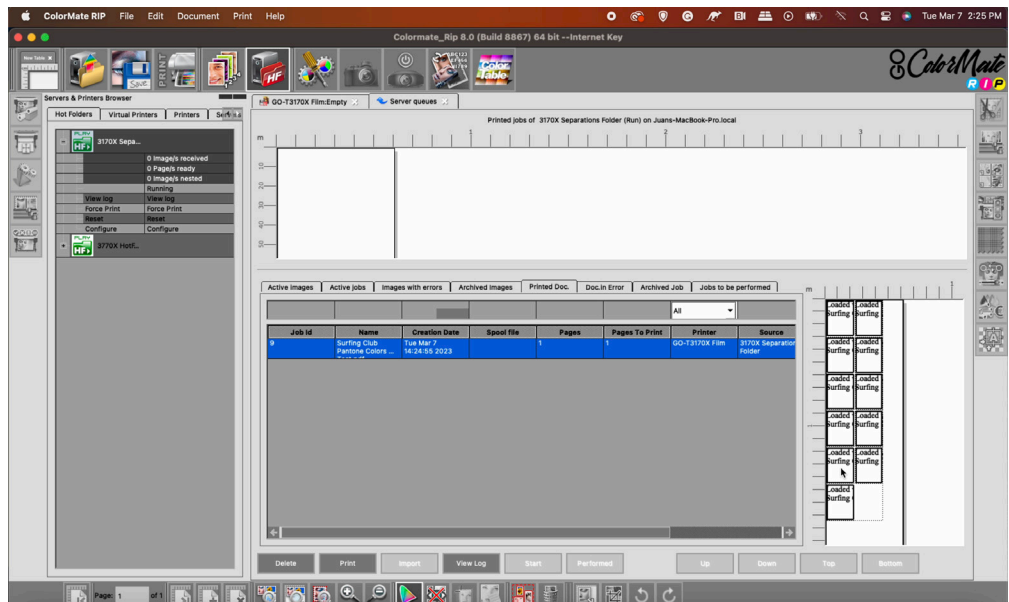


Call Us at: (408) 394-7595 • www.inkjetbiz.com

First, it will go to **Active Jobs**, including all the color plates from the file.



Once it is finished, the plates will show up in the **Printed Jobs** tab.



For additional information and training, please **contact us**.



Call Us at: (408) 394-7595 • www.inkjetbiz.com